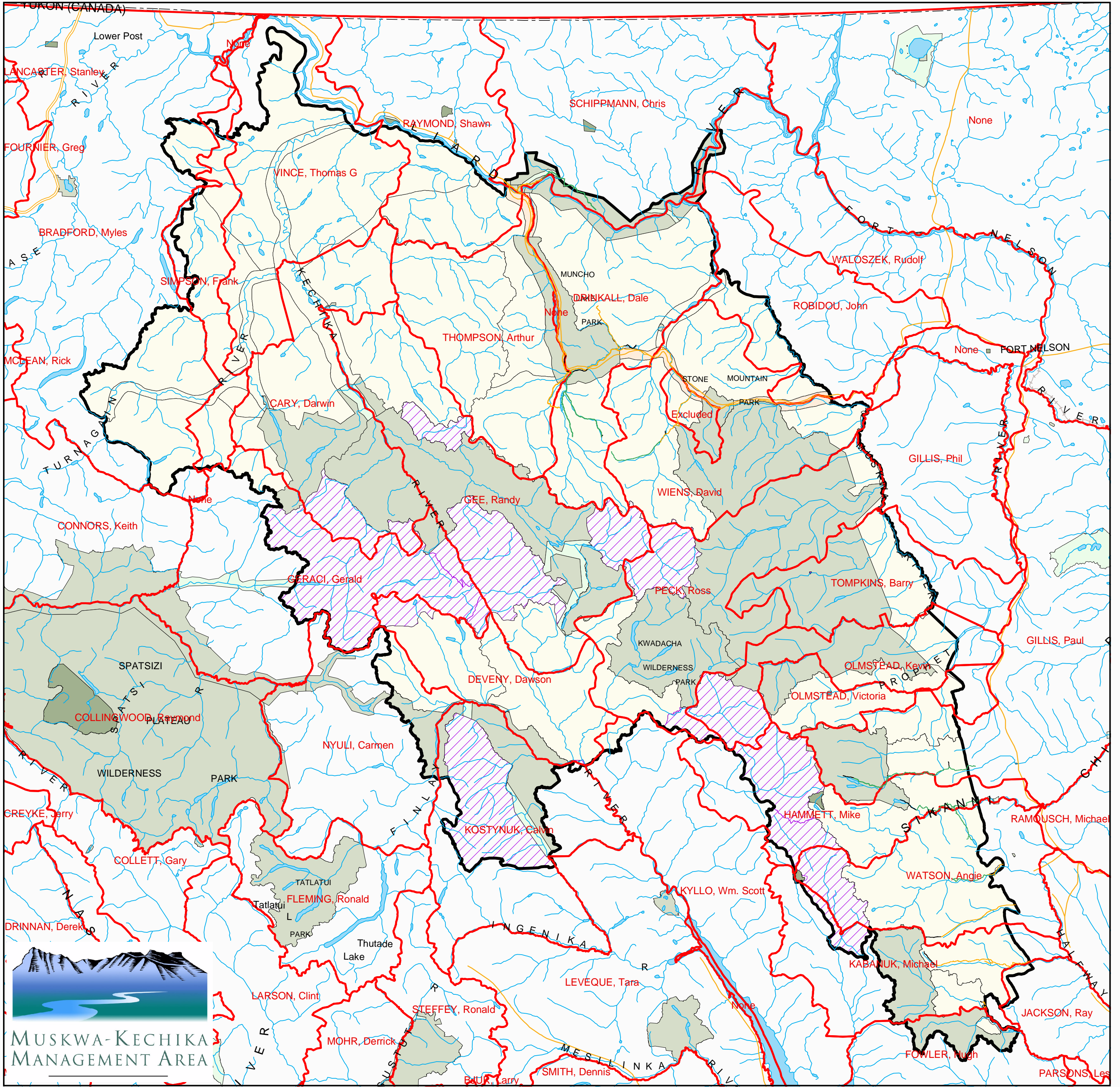


Muskwa Kechika Management Area: Guide Outfitter Boundaries



MUSKWA-KECHIKA
MANAGEMENT AREA



Muskwa Kechika Management Area Boundary	Road
Parks	Trail
Ecological Reserves	Rail Line
Private In-holdings	Closed to all motor vehicle traffic (except snowmobiles in winter)
Protected Areas	Travel is restricted to within 10 metres of route
Resource Management Zones	
Agriculture/Settlement	Travel is restricted to within 10 metres of route (vehicles under 500 kg only)
Enhanced	Travel is restricted to within 400 metres of route *
General	Travel is restricted to within 400 metres of route (vehicles under 500 kg only)
Special	River/Stream
Special - Wildland	River/Lake
Guide Outfitter Area Boundaries	Marsh

* Restricted to Alaska Highway right of way through Muncho Lake, Stone Mountain and Northern Rocky Mountains Parks/Protected Areas

1:1,100,000

0 10 20 30 40 50
Kilometers

Data Sources and Notes

Muskwa Kechika Management Area Boundary - Ministry of Sustainable Resource Management (Peace)

Guide Outfitter Area Boundaries - Ministry of Water, Land and Air Protection

Muskwa Kechika Designated Access Routes - Ministry of Water, Land and Air Protection (Peace)

Parks and Protected Areas - Ministry of Water, Land and Air Protection (Peace)

Resource Management Zones - Ministry of Sustainable Resource Management (Prince George)

Produced for:
Resource Management Division - NIR

Produced by:
BRITISH COLUMBIA
Ministry of Sustainable Resource Management
Business Solutions Branch

Projection/Datum: Albers/NAD 83
Date Created: August 10, 2004
Created by: Prince George Service Centre