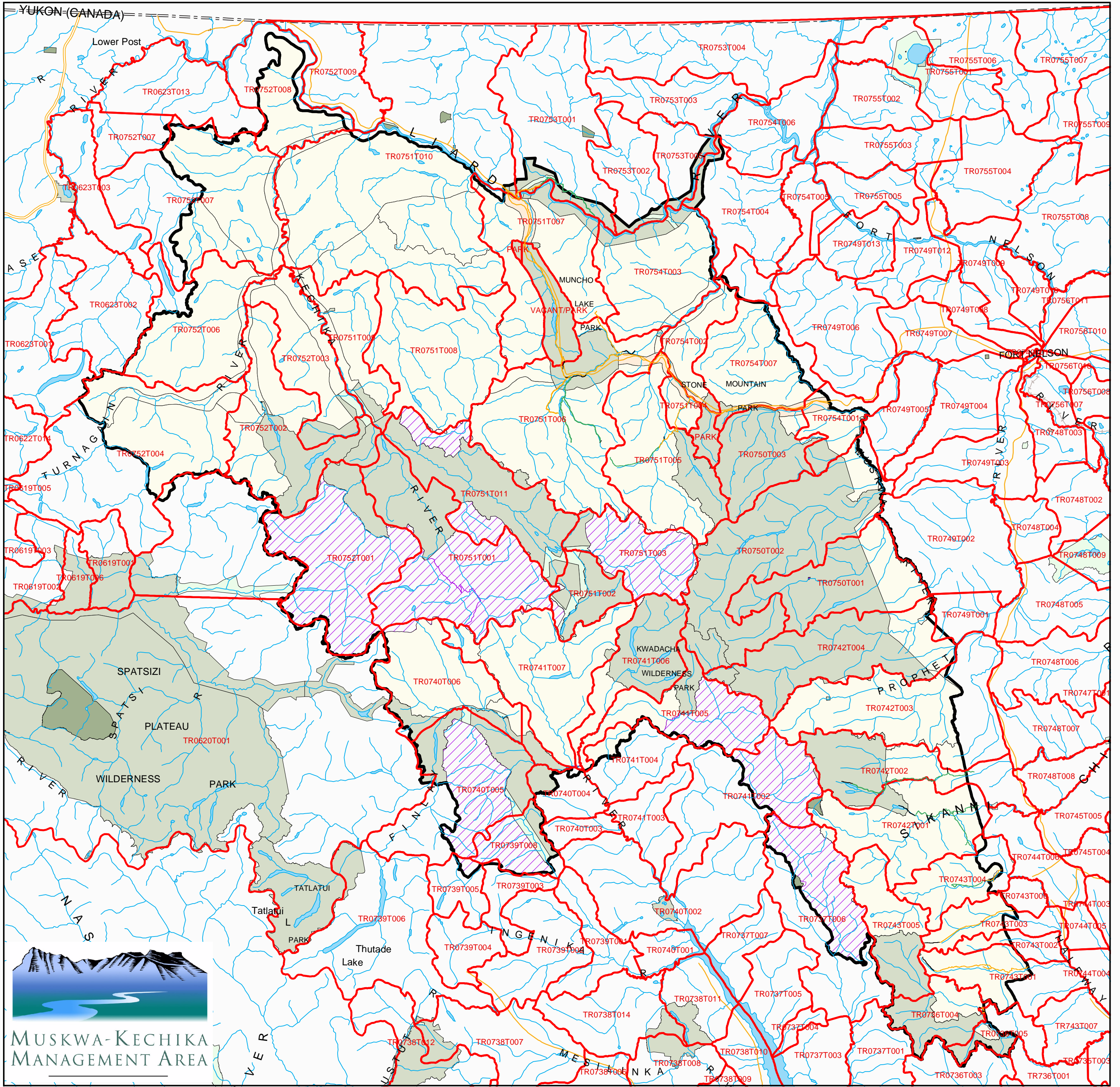


# Muskwa Kechika Management Area: Trapline Boundaries



MUSKWA-KECHIKA  
MANAGEMENT AREA



Muskwa Kechika Management Area Boundary	Road
Parks	Trail
Ecological Reserves	Rail Line
Private In-holdings	Closed to all motor vehicle traffic (except snowmobiles in winter)
Protected Areas	Travel is restricted to within 10 metres of route
<b>Resource Management Zones</b>	Travel is restricted to within 10 metres of route (vehicles under 500 kg only)
Agriculture/Settlement	Travel is restricted to within 400 metres of route *
Enhanced	Travel is restricted to within 400 metres of route (vehicles under 500 kg only)
General	River/Stream
Special	River/Lake
Special - Wildland	Marsh
Trapline Boundaries	

**Data Sources and Notes**

Muskwa Kechika Management Area Boundary - Ministry of Sustainable Resource Management (Peace)

Trapline Boundaries - Ministry of Water, Land and Air Protection

Muskwa Kechika Designated Access Routes - Ministry of Water, Land and Air Protection (Peace)

Parks and Protected Areas - Ministry of Water, Land and Air Protection (Peace)

Resource Management Zones - Ministry of Sustainable Resource Management (Prince George)

---

Produced for:

**Resource Management Division - NIR**

Produced by:

**BRITISH COLUMBIA**

**Ministry of Sustainable Resource Management  
Business Solutions Branch**

Projection/Datum: Albers/NAD 83  
Date Created: August 10, 2004  
Created by: Prince George Service Centre

