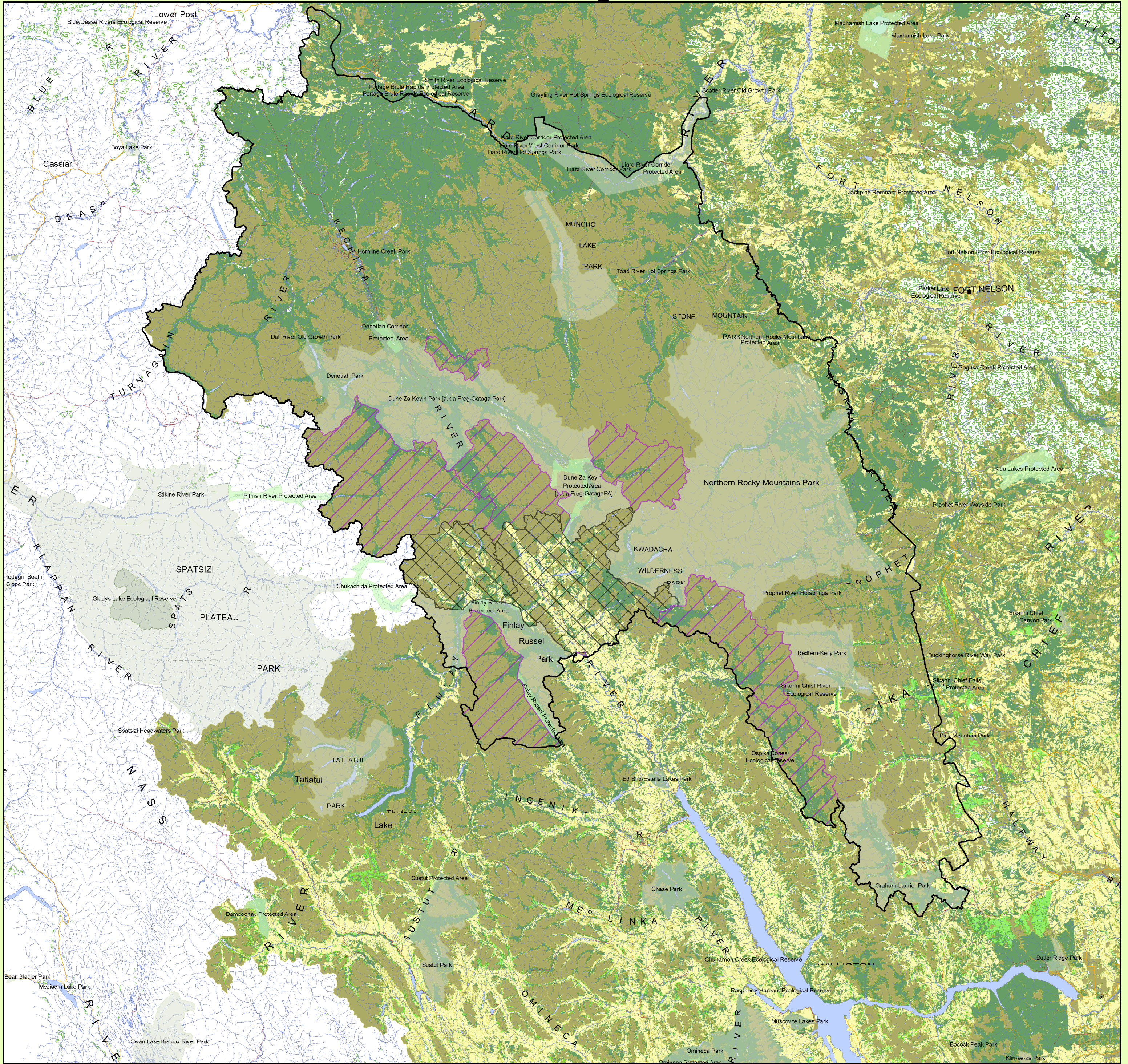


Muskwa-Kechika Management Area: Timber Harvesting Land Base



Legend

Muskwa-Kechika Management Area Boundary

Timber Harvesting Land Base

- Greater Than 75% of Area Available for Harvesting
- Less Than 75% of Area Available for Harvesting
- Non-Productive Areas
- Unavailable For Harvesting Areas

Resource Management Zones

- Enhanced
- General
- Special
- Special - Wildland

- Ecological Reserves
- Protected Areas
- Parks
- Road
- Trail
- Rail Line
- River/Stream
- River/Lake
- Marsh

The different classes are based on the most recent TSR netdown. Non-productive areas are excluded from contributing to Crown Forest Land Base, and old growth and wildlife tree biodiversity targets (i.e. 100% removals).

Data Sources and Notes

Boundary data gathered from the Land and Resource Data Warehouse at giswshse.env.gov.bc.ca

Layer Files are:
Muskwa-Kechika Management Area Boundary - ILMB
P:\prg\landuse\srpmuskwatma_mk

Timber Harvest Land Base Coverages - ILMB
P:\prg\landuse\thb\thb_dde (TSR2/LUP July 2002)
P:\prg\landuse\thb\thb_dfn (TSR2/LUP dataset 2000)
P:\prg\landuse\thb\thb_dja (TSR2/LUP 2002)
P:\prg\landuse\thb\thb_djo (TSR2/LUP dataset July 2002)
P:\prg\landuse\thb\thb_dmk (TSR2/LUP dataset 2002)
P:\prg\landuse\thb\thb_dmv (TSR2/LUP dataset 2000)
P:\prg\landuse\thb\thb_dva (TSR2/LUP 2001)

Parks and Protected Areas - Ministry of Environment
P:\corp\arcwshse\prk\tpas_bc

Resource Management Zones - ILMB
P:\prg\landuse\rmz



Produced for:
Muskwa-Kechika Advisory Board

Produced by:
 BRITISH COLUMBIA
www.gov.bc.ca

Integrated Land Management Bureau
Peace Service Centre
Filepath: W:\sr\m\l\arcproj\l\fs_07_0143_MT_PF_MK\fin\
Projection/Datum: BC Albers/NAD83
Date Created: 2008/03/03
Created by: Philip K.T. Lam
Land Information Management

