

Muskwa-Kechika Advisory Board

2006-2007 Annual Report

to the Premier and the Public

Photo: Wayne Sawchuk



MUSKWA-KECHIKA
MANAGEMENT AREA

Photo Credits:

Ayotte, Jeremy
Barradell, Bob
Briggs, Kimberly
Forest, Tara
Grilz, Perry
Ministry of Environment
Oil and Gas Commission
Sawchuk, Wayne
Tech Cominco
Vince, Karrilyn
Wagner, Chris
M-K Environmental Youth Camp

Canadian Cataloguing in Publication Data
Muskwa-Kechika Advisory Board
Province of British Columbia, Canada
Annual Report to the Premier and the Public - Fiscal Year
1998/1999 - Annual

ISSN 1492-4021=Annual Report - Muskwa-Kechika
Advisory Board
(Fort St. John, British Columbia, Canada)

1. Muskwa-Kechika Advisory Board (BC) - Periodicals.
2. Muskwa-Kechika Trust Fund (BC) - Periodicals.
3. Natural resource management areas - British Columbia -
Periodicals.
4. Muskwa-Kechika Management Area (B.C.)
I. Title

HC117.B7M87 333.76'15'0971105 C00-960167-8



Photo: Chris Wagner

Table of Contents

Message from the Chair	ii
Executive Summary	iii
Background	4
Muskwa-Kechika Management Area	4
Muskwa-Kechika Advisory Board	5
IAMC Report Overview	6
M-KAB Advice to Government	7
Stone's Sheep Research Project	7
Mining and Mineral Exploration	7
M-KMA Wildlife Management Plan	7
M-KMA Provincial Parks	8
M-KAB Project Initiatives and Achievements	9
Awareness and Support	9
Knowledge and Understanding	10
Monitoring, Reporting and Advice	13
Organizational Development	14
Resource Management	15
Additional Activities	16
Contingency Fund	16
M-KAB Financial Report	17
Muskwa-Kechika Funding Changes	17
Muskwa-Kechika Expenditure Overview	17
Appendix 1: Board Member Biographies	18
Appendix 2: M-K Expenditures by Program	20



Photo: Chris Wagner

Message from the Chair

I look forward to continuing my work with the Muskwa-Kechika Advisory Board (M-KAB), now in the role of Chair for 2007-2008. Working with the Board since 2001, I have learned what a wonderful opportunity the Muskwa-Kechika Management Area (M-KMA) presents to ensure well planned land use and carefully managed resource development. In the current context, the M-KMA can be managed in a manner that allows development activities to occur while still maintaining the vast and diverse wilderness and wildlife that makes it so unique in today's world.

I would also like to extend thanks to outgoing M-KAB Chair Ross Peck for the time that he dedicated as Chair and also as a Board member. Further, I would like to recognise other Board members who completed their terms in 2006-2007 including Bruce McKnight, David Pryce, and Wayne Lewis, for their contributions to the Board.

The 2006-2007 and the upcoming 2007-2008 years are proving to be very important transition years for the Board. In February 2006, Minister Pat Bell asked the Board to undertake a "Strategic Land Use Plan Implementation Framework" project that would provide recommendations for the M-KMA, the three northern Land and Resource Management Plans (LRMP's) that created the M-KMA (Fort St. John, Fort Nelson and Mackenzie), and make further recommendations from our experience that could apply to provincial land use planning. Over the past year and a half, this project has evolved with input from Board members who represented a variety of M-KMA constituencies, First Nations, and stakeholders. The project report will be submitted to the Minister in June 2007.

The Muskwa-Kechika Management Area was initiated in 1998-1999 and I invite all British Columbians to learn more about this significant and unique area of our province.

Yours Respectfully,

Tom Briggs
Chair, Muskwa-Kechika Advisory Board



Photo: Kimberly Briggs

Executive Summary

The Muskwa-Kechika Management Area (M-KMA) was recognized as a significant remote wilderness with abundant wildlife; therefore the provincial government established it in the M-KMA Act, 1998.

The Muskwa-Kechika Advisory Board (M-KAB) reviewed the 2005-2006 Inter-Agency Management Committee Report, which was submitted in February 2007. This report summarises the government authorised activities in the M-KMA. The M-KAB may formulate advice to the government based on this report. Preliminary information had been provided for the 2006-2007 IAMC report.

In 2006-2007 the M-K Advisory Board provided a variety of advice to government regarding resource management in the M-KMA. The advice submitted to government is highlighted in this report.

The M-K Advisory Board received 1.3 million in government voted funds. These funds were used to achieve various projects and initiatives directed by the M-K Business Plan. Twenty-four projects totalling \$1,237,388.86 were carried out. The projects conducted are listed in this report.

The Muskwa-Kechika Information Office, located in the Fort St. John Visitors Centre, continues to provide services to the M-KAB and the public.

During this year, the M-KAB focused efforts to strengthen its relationship with the provincial government. The Board worked to develop recommendations to the provincial government through its Strategic Land Use Plan Implementation Framework (SLUPIF) Project. It also engaged in an extensive internal and external review as part of the SLUPIF Project, with the intent of improving the effectiveness and efficiency of M-K Advisory Board operations and advice to government. The final report will be made public following First Nations consultation, as well as government review and acceptance of the recommendations.

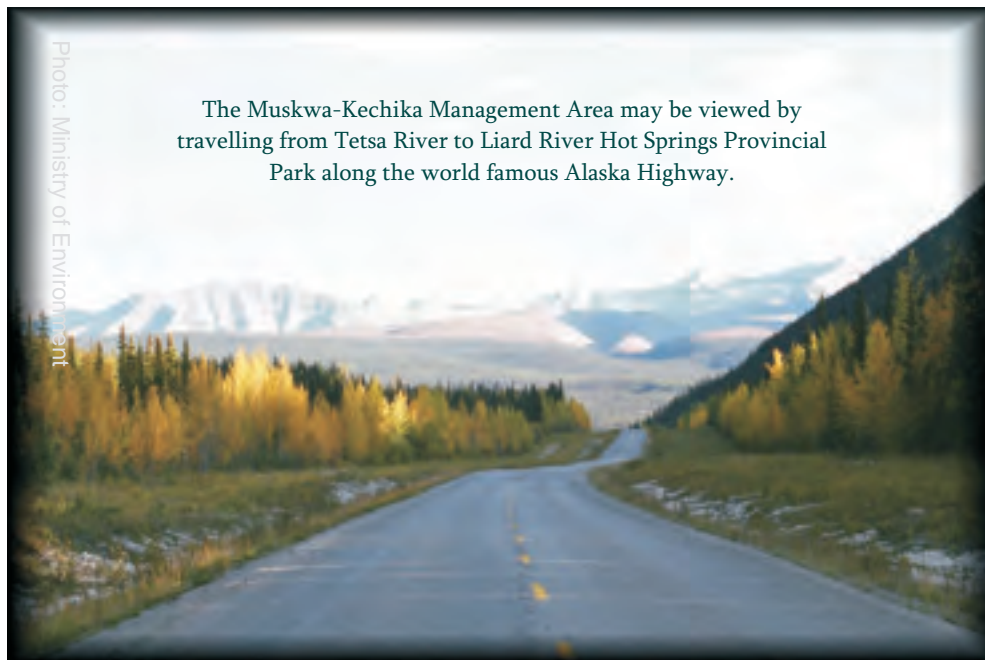
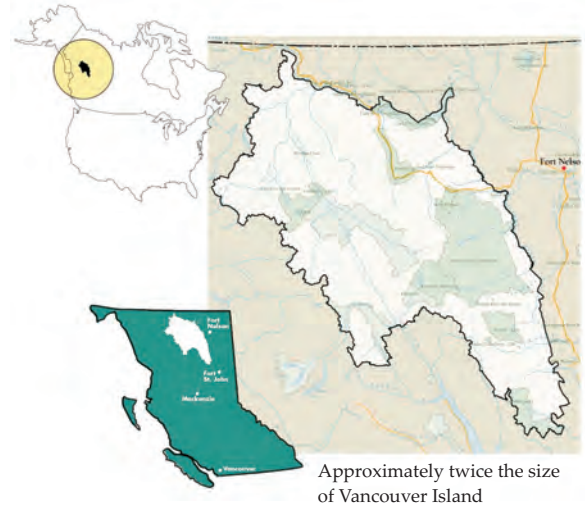


Background

Muskwa-Kechika Management Area

The Muskwa-Kechika Management Area (M-KMA) is nearing its tenth year as a unique land management model, which is designated in the M-KMA Act (1998). This 6.4 million hectare area in northern British Columbia (BC) was identified for its special qualities through the provincial Land and Resource Management Planning (LRMP) process. The area lies within the Fort St. John, Fort Nelson and Mackenzie LRMP areas. The west side of the M-KMA was added with the completion of the Mackenzie LRMP in 2000-2001.

Resource development is permitted in 75% of the area, while 25% is designated under the provincial parks system where resource extraction is not permitted. Those areas located outside of parks are divided into Resource Management Zones, each with specific objectives for resource management.



M-KMA Vision

"The Muskwa-Kechika Management Area is a globally significant area of wilderness, wildlife and cultures, to be maintained in perpetuity, where world class integrated resource management decision-making is practiced ensuring that resource development and other human activities take place in harmony with wilderness quality, wildlife and the dynamic ecosystems on which they depend"

Muskwa-Kechika Advisory Board

M-KAB Mission

"Provide respected and trusted advice that ensures the dynamic ecosystems, wilderness, wildlife and cultural diversity of the Muskwa-Kechika Management Area are maintained in perpetuity"

Members

The Muskwa-Kechika Advisory Board (M-KAB) is a volunteer board appointed by the Premier of British Columbia. Board members represent a variety of perspectives including First Nations, conservation, local constituencies and sectors. These members work to ensure that the vision for the M-KMA is fulfilled. (See appendix 1 for Board member biographies)

Role

The M-KAB is mandated to contribute to the stewardship of the M-KMA on behalf of all British Columbians. Their role is to provide advice to the provincial government regarding natural resource management in the M-KMA to ensure that activities are consistent with the M-KMA Management Plan objectives. The provincial government has the legislated authority for resource activities in the M-KMA. The M-KAB also plays a role in recommending appropriate consultation prior to these activities occurring.

In addition to providing advice, the Board receives funding from the BC government to maintain its operations and to recommend allocations to M-KMA projects. These projects enhance awareness as well as support and advance research and inventory needs.

Partnerships

The M-K Advisory Board has partnered with many organizations over the years to fund a variety of projects. Examples include membership on the Stone's Sheep Steering Committee as well as joint initiatives with the Ministry of Environment (MOE) to address capacity issues and other needs in the M-KMA. Projects included enhancing compliance and enforcement, developing a restoration plan for Redfern Trail and conducting environmental cleanup. In addition, the Board

maintains a multi-year partnership with the University of Northern British Columbia (UNBC).

Operations/Work

The Board meets as a whole two to three times per year to discuss projects and identify issues concerning the M-KMA. Decisions are consensus-based and are reached by listening to and collaborating with stakeholders, interest groups and First Nations.

Between board meetings, M-KAB committees work on issues, advice and advancing projects. Administrative and professional services support is contracted to assist with day to day management of M-K Advisory Board and M-KMA communications activities.

An Executive Committee meets monthly to ensure that M-KAB responsibilities are met. This committee is charged with making funding and advice decisions that are required prior to full M-K Advisory Board meetings.

The committees work to fulfill program area objectives identified in the M-KAB Strategic and Business plans by reviewing projects and developing advice as follows:

- ◆ Awareness and Support Committee; focuses on communication about the M-KMA.
- ◆ Knowledge and Understanding Committee; focuses on data management, traditional knowledge, and delivery of research and inventory in the M-KMA.
- ◆ Monitoring, Reporting and Advice Committee; delivers advice on land use planning, monitoring and enforcement, and the state of the M-KMA.
- ◆ Organizational Development Committee; focuses on building relationships with government and First Nations, as well as M-KAB membership and capacity.
- ◆ Resource Management Committee; delivers advice for parks, wildlife, oil and gas, mining, wind and other resource management issues in the M-KMA.



IAMC 2005-2006 Overview



Purpose

Each year the BC government through the Northern Region Inter-Agency Management Committee (IAMC) submits a report to the M-KAB that summarises resource planning and management activities in the M-KMA. The IAMC Report information assists the Board in its monitoring role to review resource management activities that are approved by government. The most recent IAMC Report was submitted to the Board for 2005-2006.

IAMC report details, including ministry goals for future years, may be viewed on the M-KAB website where the report is posted to the Resource Library. The following is a brief summary of the 2005-2006 IAMC report.

Reported Activities

Resource activity levels in the M-KMA were very low in 2005-2006. No harvesting occurred in the Peace, Fort Nelson or Mackenzie Forest Districts. Fort Nelson Forest District identified that the next step to follow up on the range project would be to develop a database compatible with a variety of systems. Mineral claims staking continued in the M-KMA, with one active exploration tenure. The company held 6 claims, and was exploring for copper. The oil and gas sector is active in the M-KMA,

with three geophysical programs approved and two completed, two exploration well applications continued, and four field inspections conducted. No new wells or pipelines were constructed or approved in the M-KMA.

Ministry of Environment work contributions included completion of final draft Park Management Plans for Redfern-Keily, Graham-Laurier and Northern Rocky Mountains parks. Rangers spent approximately 250 days within the M-KMA. Other activities included park campsite cleanup, hiring of a project manager/biologist to lead the Stone's Sheep Research Project, completion of the next draft M-KMA Wildlife Management Plan, and wolf sterilizations project monitoring. The Ministry of Tourism Sports and The Arts is responsible for the Muskwa Boat Launch and Gatho Creek recreation sites, as well as Chowade, Christina Falls, Cypress, Redfern and Trimble Lake trails.

First Nations who have traditional territories in the M-KMA continue to use the area for their respective needs. The BC government continued to work with First Nations on the New Relationship initiative. As well, guide outfitters and trappers operate on the land base annually with their respective tenures and permits.

M-KAB Advice to Government

Guided by its legislated role, mandate and Business Plan, Muskwa-Kechika Advisory Board provided advice to the provincial government regarding resource management in the M-KMA. The Board's advice is a key component to ensure that the vision and intent for the M-KMA are achieved.

Stone's Sheep Research Project

The Stone's Sheep Research Project recommendations, as per the Pre-Tenure Plans, must be provided prior to oil and gas activity taking place in the Sulphur /8 Mile area of the M-KMA. The M-KAB supports this important research that will help to ensure Stone's sheep population sustainability in the long term. In 2006-2007 the Muskwa-Kechika Advisory Board advised government agencies to provide funding and support to the Stone's Sheep Research Project in order to ensure its completion.

Mining and Mineral Exploration

Mineral exploration has recently begun in the M-KMA. As there has been relatively limited activity in this area during recent years, there is no specific plan for mineral exploration and mining activity in the M-KMA. Residents of the Toad River Area, guide outfitters and others raised concerns in fall 2006 about the mineral exploration activity. The M-KAB considers it important to ensure that stakeholders and other interest groups are notified and consulted as new activities

emerge in the M-KMA. To this end, the Board wrote to the Ministry of Energy, Mines and Petroleum Resources to ask that the Ministry meet with stakeholders at Toad River.

M-KMA Wildlife Management Plan

The M-KAB reviewed the October 2006 M-KMA Wildlife Management Plan Draft. Key recommendations regarding the plan included to:

- ◆ Clarify how the Wildlife Plan fits with the other M-KMA local strategic plans.
- ◆ Acknowledge and reference climate change.
- ◆ Reconsider wording related to surface disturbance for mining and mineral exploration activities in the M-KMA.

The M-K Advisory Board recommended that First Nations, sectors and others previously consulted review the new draft Wildlife Management Plan as substantial changes had been made to the plan since its earlier draft.

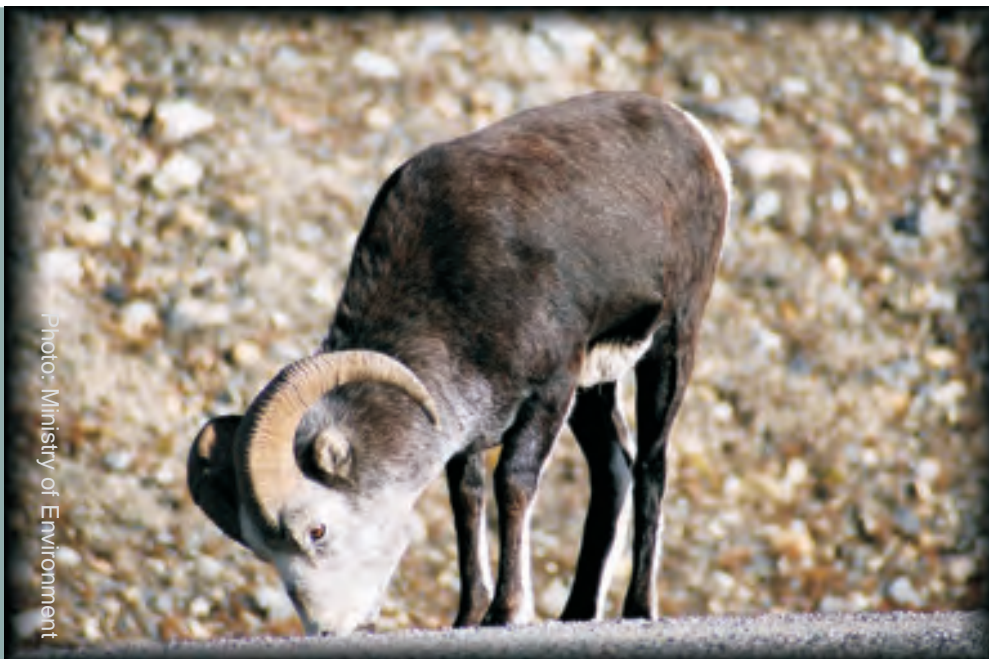


Photo: Ministry of Environment

M-KAB Advice to Government

M-KMA Provincial Parks

General Park Management Plan Direction

The Board recommended that all M-KMA park plans should:

- ◆ reference the M-KMA Wilderness Definition that was developed by the Board, and
- ◆ state any changes to park designation that would include a meaningful consultation with the M-KAB, First Nations and the public, (e.g. a designation change that would allow permanent or temporary road construction).

Local Ministry of Environment (MOE) Park planning staff and Regional Manager met with the M-KAB Parks and Recreation Planning subcommittee in December 2006. MOE staff agreed that Board recommendations that were generally applicable to parks in the M-KMA would be taken into consideration for all park planning within the M-KMA.

Graham-Laurier Park

The M-KAB reviewed and endorsed the final draft Park Management Plan for Graham-Laurier Provincial Park, subject to the Board's general advice and specific recommendation to:

- ◆ add direction to the Graham-Laurier Park Management Plan that consultation will be held with the M-KAB, First Nations and the public for future road development, and that questions of road size, lifetime, reclamation and use shall be considered and planned for.

The M-K Advisory Board will continue to work with the provincial government regarding this advice.

Northern Rocky Mountains Park

The M-K Advisory Board reviewed the Northern Rocky Mountains Park (NRMP) Management Plan and recommended to the Ministry of Environment that:

- ◆ the NRMP Public Advisory Group members should be provided with an opportunity to view and comment on the NRMP Plan prior to its approval; and
- ◆ a broader public and First Nations consultation should be conducted by posting the draft plan to the Internet for a comment period of 30 to 60 days.



The M-KAB also met with local MOE park planning staff to identify further recommendations for consideration in the draft NRMP plan. The Board anticipates receiving a final draft for review in future, at which time final advice on the plan will be formally submitted.

Provincial Parks Firearms Policy in the M-KMA

The M-KAB recommended to MOE that members of the general public should be allowed to carry firearms for protection purposes in the M-KMA provincial parks. Additional recommendations were to make changes to the Park Act Regulation and park management plans to allow firearms for protection purposes, and to post a short-term notice in the BC Gazette to stand until the regulation is updated. The M-K Advisory Board will continue to pursue this until it is addressed by government.

M-KAB Project Initiatives and Achievements

The M-KAB worked this year to strengthen its communications with provincial government agencies, including holding a number of joint meetings and workshops. In addition to continuing multi-year projects and initiating new projects, the Board undertook a land use planning project in 2006-2007.

Relevant projects funded in 2006-2007 are highlighted in the following sections, according to the M-K Business Plan Program Areas.

Awareness and Support

The Awareness and Support Committee of the Board focuses on gaining support for and increasing awareness of the Muskwa-Kechika Management Area. A detailed communications plan was approved by the M-KAB in 2006 and is used to direct communications activities.

The committee sought external funding for the very successful M-KMA Environmental Youth Camp hosted annually by First Nations. No government funding was made available; therefore, the Muskwa-Kechika Advisory Board continues to support the camp with its project funding.



Photo: M-K Youth Camp

Communications

The Board's current objective with its communications work is to increase awareness of the M-KMA on a local, regional, provincial and international level. It is also to ensure that the purpose of the M-KMA and the role of the M-KAB are known. In 2006-2007 the communications emphasis was on northern communities near the M-KMA. The M-KAB undertook a variety of communications initiatives aimed at improving public and stakeholder understanding of the M-KMA. The M-KAB work included developing a fall 2006 M-K Newsletter and distributing 18,000 copies. The newsletter highlighted some of the M-K projects and may be viewed on the M-KMA Website. The Annual Report for 2005-2006 was developed and circulated to the Premier and the Public.

M-KMA Information Office staff developed and distributed the 2005-2006 Annual Report, updated the M-KMA website, hosted the M-K booth at the 2006 Oil and Gas Tradeshow and delivered presentations locally. M-KMA promotional items were sold, donated or gifted to a number of local and regional community organizations. In June 2006 "BC's Working Wilderness," became the approved tag line for the M-KMA.

The M-K Advisory Board will continue its work to increase awareness and understanding of the Muskwa-Kechika Management Area according to the communications plan.

M-KMA Youth Camp

The M-KMA Youth Camp, hosted each year by First Nations within the M-KMA, provides an invaluable experience for northern youth, both aboriginal and non-aboriginal. The camp provides a wilderness experience, reconnects youth with the land, teaches environmental stewardship, traditional knowledge and skills, and enhances personal development.

The M-KMA Youth Camp held August 21-25, 2006 changed locations due to extenuating circumstances. A modified camp was hosted by Halfway River First Nation at Cypress, Alaska Highway Mile 143, and was attended by First Nations elders as well as the Chief and Council. This camp focused on building relationships between the youth and the elders.

The M-KAB will extend an invitation to the Kaska Dena First Nation for the summer 2007 camp, as the invitations to Kaska Dena and Treaty 8 alternate each year.

The 2006 Youth Camp report may be viewed on the M-KAB website.

M-KAB Project Initiatives and Achievements

UNBC Partnership

As previously identified, the M-KAB and UNBC have a valued partnership designed to enhance research and data collected in the M-KMA. Over the years research projects have ranged from wildlife biology and ecology to cultural heritage and traditional knowledge. Project results were reported to the public through a series of community presentations provided by Dr. Katherine Parker and students. Funding in 2006-2007 was used to complete the multi-year Besa Prophet Research project.

Management Area. Sponsorship of these events was also within this project, for example \$500.00 was directed in sponsorship of the Northern Rockies Alaska Highway Tourism Association Annual General Meeting. NRAHTA work was related to the M-KMA through its Alaska Highway Initiative. A \$500.00 sponsorship was also provided to the North American Moose Conference, hosted in Prince George, BC.

Knowledge and Understanding

Stone's Sheep Research Project

Although funding is targeted to come from various sources other than M-K funding, the Board directed funding to the Stone's Sheep Research project in order to ensure that it was adequately funded during the 2006-2007 fiscal. The M-KAB also took the lead in securing a project manager for this project. Full details regarding the project and work to date can be located on the project website at: www.synergyecology.ca/S8Msheep.

The Stone's Sheep Steering Committee, a multi-stakeholder group, was initiated to oversee the Stone's Sheep Research Project. The Science Committee reports to the Steering Committee regarding technical

aspects of the project; it has developed a study plan for the project, which drives research requirements for the project. The M-KAB provided funding to support meetings and travel costs for these two committees.

Stone's Sheep Mapping Sulphur/8 Mile Area

The aim of this two-year project, undertaken by Roger Wheat from UNBC, was to conduct a mapping pilot project in the Sulphur/8 Mile area. Mapping data was required to assist in the research requirements for the Stone's Sheep Research Project. The mapping was completed in 2006-2007 and is now being used by the Stone's Sheep Project Manager.



Photo: Perry Griz

An M-K Professorship position has been in place throughout the partnership to manage research projects in the M-KMA. This partnership enables valuable research and other projects in the M-KMA, as well as providing opportunities for graduate students to gain hands-on research and technical experience.

The M-KAB will continue to work with UNBC to ensure that there is a partnership in place that assists UNBC and the M-KAB to achieve the vision for the M-KMA.

M-KAB Attendance at Conferences and Events

The Muskwa-Kechika Advisory Board members attended conferences and community events that were relevant to resource management and the Muskwa-Kechika

M-KAB Project Initiatives and Achievements



Planning and Research Integration Workshop

A multi-year project, the Planning and Research Integration Project (PRIP) was directed by the M-KAB to review and summarise land use and resource planning and management in the M-KMA. The final report identified gaps in resource management, research and inventory in August 2005. Further project work was to continue to develop a monitoring framework model and a means of providing access to resource management tools that could support and assist resource managers in making decisions about how to conduct activities in the M-KMA.

Following up on the PRIP report, the workshop in January 2007, involved 43 participants including Board members, staff from BC ministries and others. The intent was to identify research and planning priorities in the M-KMA, as well as areas where there were gaps in data and inventory.

Participants identified priority research and planning issues, with examples below illustrating areas that were lacking, but were needed to help guide resource management decisions in the M-KMA:

- ◆ cumulative impact management framework that incorporated adaptive management and thresholds;
- ◆ comprehensive monitoring and reporting framework to ensure that the M-KMA Vision is achieved; and
- ◆ comprehensive integrated plan to address access management for all sectors.

The following are examples of the recommendations to address these items:

- ◆ Develop a cumulative impact management model for the M-KMA.
- ◆ Use specific watersheds within the M-KMA to test development thresholds.

The M-KAB will continue to work with government, industry, First Nations and others to address planning and research needs in the M-KMA.



M-KAB Project Initiatives and Achievements



M-KMA Traditional Knowledge Strategy

Traditional Knowledge (TK), refers to the oral history, knowledge, cultural practices and other First Nations traditions and includes knowledge of the land and resources, that are passed down from generation to generation. The Muskwa-Kechika Advisory Board desires that Traditional Knowledge from First Nations with traditional territory in the M-KMA be used in making M-KMA management decisions. The M-K Advisory Board contracted a consultant to develop a strategy that would help the Board advance this important work. The M-KAB is reviewing this strategy and will advise government regarding its implementation.

Ecosystem Approach to Habitat Capability Modelling and Cumulative Effects Management

Through the M-KAB partnership with UNBC, a multi-year research project was completed in 2006-2007. The research was conducted by team of graduate students and M-K Research Professor Dr. Katherine Parker.

This four year project, in the Besa-Prophet area of the M-KMA, studied predator-prey relationships between large predators (grizzly bears and wolves), and large ungulates (woodland caribou, Stone's Sheep, moose and elk). The animals' distribution and ranges were mapped using radio collars; samples were collected for analysis to determine the animals' diets and pregnancy rates; and calving areas were differentiated from areas where animals foraged.

Data from this project will be used to update wildlife habitat models, monitor the status of key species, and improve land use plans. Understanding predator-prey systems in the M-KMA will help to inform cumulative effects management and resource management.



M-KAB Project Initiatives and Achievements

Monitoring, Reporting and Advice

Strategic Land Use Plan Implementation Framework Project

The Strategic Land Use Plan Implementation Framework (SLUPIF) project will provide recommendations regarding the commitment to the government-to-government relationship with First Nations, the future of the Muskwa-Kechika Advisory Board, the continued implementation of the M-KMA, and other areas of strategic land use plan implementation. Under the direction of Minister Pat Bell, the Board worked on recommendations for:

- ◆ future land use planning and implementation in the M-KMA, Fort St. John, Mackenzie and Fort Nelson LRMP areas, and more broadly for the rest of BC; and
- ◆ recommendations for future M-K Advisory Board governance structure, role and funding.

To ensure that the process was transparent and accessible, First Nations, government, interest groups and stakeholders were updated and provided opportunity to comment at various stages of project development.

Future work will continue in the 2007-2008 fiscal year, and will include a government review of the final draft. The Board will submit a final report to government in early summer 2007.

State of the M-KMA Report

The M-K Advisory Board determined that improved and more detailed reporting and assessment of activities and impacts in the M-KMA was needed. To this end, the M-KAB initiated the development of a State of the M-K Report that will summarise activity levels and intensity, as well as track changes over time in the M-KMA.

A report framework was drafted in 2006-2007, which took into consideration wildlife and wilderness as pillars of the M-KMA. It also addressed assessment of both the M-KMA and the M-KAB independently. Factors to be evaluated included social, economic and environmental.

The M-K Advisory Board intends to undertake report development in the near future, producing a State of the M-K Report every two to three years.



M-KAB Project Initiatives and Achievements



Photo: Tara Forest

Organisational Development

M-KMA Information Office and Staff

Located in the Visitor Center in Fort St. John, BC, the M-KMA Information Office serves as a base of operations through which a range of management, administration and communication services support the daily work of the M-KAB and M-KMA outreach. The M-KMA Information Office offers a central, publicly accessible location where British Columbians and visitors alike may direct their inquiries and information requests.

The office, which receives visitors locally, regionally, nationally and worldwide, offers a small resource library and reading area. Promotional items featuring the M-KMA logo (i.e. oil skin caps) are available for sale to the public. The Office also serves as a location for M-KAB Committee meetings and other related meetings.

M-KAB Chair Honorarium

The Muskwa-Kechika Advisory Board Chair commitment to the work of the M-KAB is significantly greater than that of the other members. The Chair spends time working with a variety of stakeholders, the media, government and First Nations to build relationships and improve understanding and awareness of the M-KMA. The Chair also dedicates time to working with staff in coordinating the activities of the Board. An honorarium is therefore provided to the Chair.

M-KAB Mandate Delivery

While the M-KAB members volunteer their time, they are reimbursed for travel and expenses to attend meetings and events relating to the work of the Board. As many of the Board members live in rural areas, or in other parts of the province, distances travelled are often great. Effort is placed into arranging meetings locally in the north, which substantially reduces meeting costs.

M-K Project Manager

The M-K Advisory Board contracted a Project Manager to assist with contract management and consultation for the various projects of the M-K Advisory Board.



Photo: Chris Wagner

Photo: Tara Forest

M-KAB Project Initiatives and Achievements

Resource Management

Restoration of the Redfern Trail

Within the M-KMA, specific routes designated in the Access Management Area Regulation under the BC Wildlife Act allow for motorized recreational vehicle access. The Redfern designated route sustains substantial recreational ATV traffic. Sections of the trail that passed through wetland areas, stream crossings and steep areas were of concern for both safety and ecological reasons.

Therefore the M-K Advisory Board directed funding towards the trail assessment. The intent was to assess trail condition, document campsites, and provide recommendations for future management options. The Ministry of Environment was the lead agency for the project with work completed by two main contractors. The contractors assessed the trail and submitted a report to the Ministry of Environment. Impacts to sections of the trail included trail braiding, soil erosion, deep mud holes, and impacts to fish habitat.



Oil and Gas Worker Orientation Guide



The Pre-Tenure Plan process identified a need for an oil and gas worker orientation in the M-KMA. The M-KAB funded a contract to develop this guide, which was completed in spring 2007.

The M-KMA Worker Orientation Guide provides background information about M-KMA history, legislation, designated access routes, oil and gas exploration and development, environmental protection measures, and worker safety. The manual is intended to be informative and educational. It is not a legislated requirement.

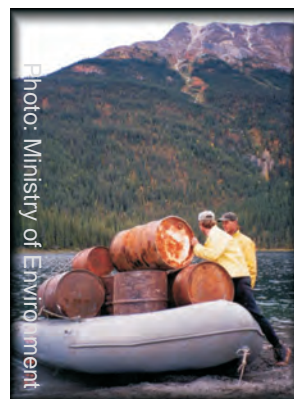
The M-KAB will continue work on this project with the Oil and Gas Commission to ensure that the guide is made available to the oil and gas industry.

M-KMA Environmental Clean Up Project

The M-KMA Environmental Clean Up project is a multi-year project conducted by the Ministry of Environment. This project adds value to the M-KMA, as each year MOE uses helicopters to remove waste left behind by mining and other activities that pre-dated the establishment of the M-KMA.

MOE reported that in 2006, 162 fuel drums, 5 drums of garbage and one burnout skidoo were removed from a number of lakes in the M-KMA.

Additional waste was identified as requiring future removal from a number of locations in the M-KMA, including: Letain Lake, Turnagain, Gataga and Racing Rivers, Toad River Hot Springs, Magnum Creek, and Davis Keays Mine Site.



M-KAB Project Initiatives and Achievements



Enhancing Compliance and Enforcement

The Muskwa-Kechika Advisory Board recognises a need to have adequate monitoring of activities in the M-KMA. To assist with this goal, the M-K Advisory Board has directed funding to the conservation officer service. The intent of this multi-year project has been to enhance monitoring and enforcement, as well as increase awareness of regulations in the M-KMA, which includes having a conservation officer conduct site visits to very remote areas.

Patrols were conducted in Mucho Lake, Redfern Trail and area, Sikanni area, Fort Nelson district within the M-KMA, and along the Muskwa River. The patrols resulted in enforcement and investigations including 208 contraventions, which also included non-M-K files. 100 tickets and 95 warnings were issued. Ongoing investigations are focused on illegal hunting activities.

It was observed that insufficient information was available about the M-KMA designated routes. Signage and end trail markers were poor and in some cases were missing altogether. Officers also assisted in other

project areas including Stone's sheep inventory.

Additional Activities

In addition to the advice to government and project work, the M-K Advisory Board provided a letter of support to the Integrated Resource Management (IRM) Business Group for a project proposal. The Board anticipated that the work of the IRM Business Group would contribute to valuable knowledge that would be useful for resource management in the M-KMA.

Contingency Fund

Professional Services

The Muskwa-Kechika Advisory Board contracted additional services to assist with meeting facilitation and other professional services.

Grant to UNBC/M-K Endowment

Funds remaining at the end of the 2006-2007 fiscal were directed into the UNBC/M-K Endowment Fund, which through the Interim Agreement is intended to be increased over time to \$1,000,000.00.

M-KAB Financial Report

Muskwa-Kechika Funding Changes

From 1998 to March 2006, the Muskwa-Kechika Advisory Board received base funding from government which was placed in the M-K Trust Fund. It was set up for government to match third party contributions. The purposes of the M-K Trust Fund are outlined in the *M-KMA Act*, S.12.

The M-K Trust Fund expired in the *M-KMA Act*, S.18 on March 31st, 2006. Subsequently, to achieve provincial general accounting principles, a decision was made to switch from the Trust Fund to ministry voted funds through the Ministry of Agriculture and Lands, Integrated Land Management Bureau with the Minister as the M-K Trustee. Working under a voted funds system, the matching ability no longer applies.

As 2006-2007 was a transition year from the M-K Trust Fund to voted funds, a small number of donations were made to the trust account.

Table 1: 2006-2007 M-K Trust Account Donations

Donor	Project	Amount
BC & Yukon Chamber of Mines	Supplementary project to support the M-KMA Mining Workshop held March 31-06	\$ 1,000.00
Northeastern BC Wildlife Fund	M-KMA Environmental Clean Up	\$ 20,000.00
TransCanada Pipelines Limited	Stone's Sheep Research	\$ 35,000.00
	Total	\$ 56,000.00

Each year the M-K Advisory Board works closely with ILMB to allocate funds to support M-KMA planning initiatives and special projects, including support for local strategic plans, research, and outreach and educational programs.

Muskwa-Kechika Expenditure Overview

In part due to changes in funding and timing some of the expenditures identified for 2006-2007 were not fully realised. A detailed list of projects initially identified for funding may be viewed in the 2006-2007 Expenditure Plan, which is posted on the M-KMA website.

The *M-KMA Act* requires that the M-K Advisory Board make recommendations to the M-K Trustee concerning annual expenditures. In 2006-2007 the M-KAB established Expenditure Plan funding categories, which aligned with the M-KAB Business Plan Program Areas.

The financial reporting provides an overview of program area and total expenditures for 2006-2007 (see Appendix 2 for a detailed report of expenditures by program area)

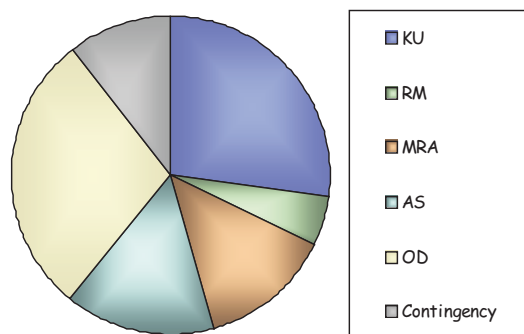


Table 2: 2006-2007 Total M-KAB Expenditures

Program Area	Total Expenditure
Knowledge & Understanding	\$ 337,203.56
Resource Management	\$ 60,477.12
Monitoring, Reporting & Advice	\$ 167,734.40
Awareness & Support	\$ 188,754.03
Organisational Development	\$ 352,516.87
Contingency	\$ 130,702.88
Total Expenditures	\$ 1,237,388.86

Appendix 1: Board Member Biographies



Ross Peck, Chair of the M-KAB and Executive Committee, is widely knowledgeable about local history and the outdoors. Appointed as Chair in 2002, he also served as vice-chair since the inception of the M-KMA. Representing the guide outfitter perspective at the Fort Nelson LRMP table, he was involved in a family business in the M-KMA for over 50 years. Recently retired from guide outfitting, he remains actively involved in ensuring a viable future for the area and the continual development of the M-KMA model. Ross is a Registered Professional Biologist and raises horses on a small ranch by the Peace River, near Hudson's Hope, BC.



Bill Lux, represents the Dease River First Nation. Bill is also the Kaska Dena Council Executive Vice Chair, Lands and Resources. As one of four Kaska Dena Advisory Board members on the Board, Bill is dedicated to representing the Dease River First Nations' perspective on land use and resource planning and management in the M-KMA.



Barry Holland, a big game hunter, pilot and backcountry traveler, brings experience in petroleum and natural gas technology, as well as occupational safety. Barry actively participated in the Fort St. John LRMP process prior to being appointed to the Board.



Bruce McKnight has had an extensive career in mineral development, including senior positions with Amax Exploration Inc and Westmin Resources Limited. He has served as Mining Sector CORE Process spokesperson for Vancouver Island and LRMP's as well as Executive Director of the BC and Yukon Chamber of Mines. He participated in the Schwindt Commission, a negotiation concerning expropriation of mining lands and the Whitehorse Mining Initiative/Land Access Issue Group. A Fellow of the Canadian Institute of Mining and Metallurgy and a member of the Association of Professional Engineers and Geoscientists of BC, he holds a Bachelor of Applied Science in Geological Engineering, an MSC in Engineering Geoscience and an MBA.



Corrine Porter, a member of the Kaska Nation, and employee for the past 10 years, recently graduated with a Natural Resource Science Bachelors Degree from the University College of the Caribou and is Executive Director of the Dena Kayeh Institute. She also participates on the North Peace Stone's Sheep Steering Committee, the Yukon Forest Management Committee, the Boreal Leadership Council and the Northern Nations Alliance. She enjoys the outdoors and is active in hiking, horse riding, boating, running, biking and fishing.



David Pryce is Vice President, Western Canada Operations, Canadian Association of Petroleum Producers. A physical geography degree from York University led to a career in oil, gas and mining environmental management. With over 20 years experience in the Upstream Oil and Gas Industry working for a major oil company, as a private consultant, and as a regulator with the National Energy Board, he joined CAPP nine years ago.



Dixie Hammett began her career as a Licensed Physical Therapist, Director of Hand Therapy Services at RHD Memorial Medical Center in Dallas, Texas. Past President of the Northern BC Guides Association she is now on its Executive, and is Chair of the Finance and Fish, Wildlife, Habitat Issues Committees, and the Guide Outfitters Association of BC. She currently co-owns and operates Sikanni River Outfitters near Pink Mountain, BC.

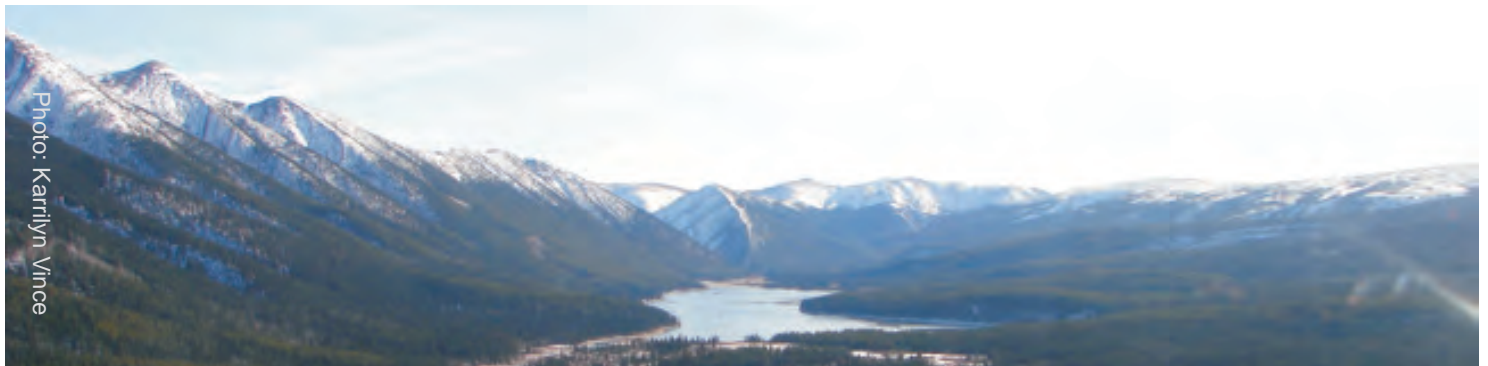


Photo: Karrlyn Vince

Appendix 1: Board Member Biographies



Shelley Middleton, resident of Fort Nelson, BC, and Regional Councillor for the Town of Fort Nelson and Northern Rockies Regional District, currently holds the Tourism, Parks and Environment portfolios. Ms. Middleton also represents the NRRD as a Director-At-Large on the Northern Rockies Alaska Highway Tourism Association Board. Shelley acts as NRRD liaison with BC Parks, the Fort Nelson Historical Society and the Fort Nelson LRMP Monitoring Committee. She brings a local government and wilderness tourism perspective to the M-KAB.



Stephanie Killam, Mayor of Mackenzie and a municipal council member for 9 years, has worked as the senior secretary at Mackenzie Secondary School since 1979. Married for 38 years she and her husband Donald have raised two children. She has served on the Museum Society, Club 55 (senior's activities), the Chamber of Commerce, the Municipal Emergency Program Committee, the Mackenzie and Area Health Advisory Committee, the Mackenzie and District Hospital Board, Community Health Council, Northern Interior Regional Health Board, and Children's and Women's Health Center as well as many others. Committed to the community and region and well-versed in environmental issues Stephanie works to strike a balance between conservation and economic development.



Tom Briggs is community-minded and was involved in municipal politics, beginning his political career in 1986 and ending in 2005. He served 7 years as a Councillor followed by 12 years as Mayor of Mackenzie, as well as on many Boards and Committees (i.e. Northern Treaties Advisory Committee Chair, and North Central Municipal Association Director). Tom is Chair of the M-K Outreach Committee and continues to play an active role locally.



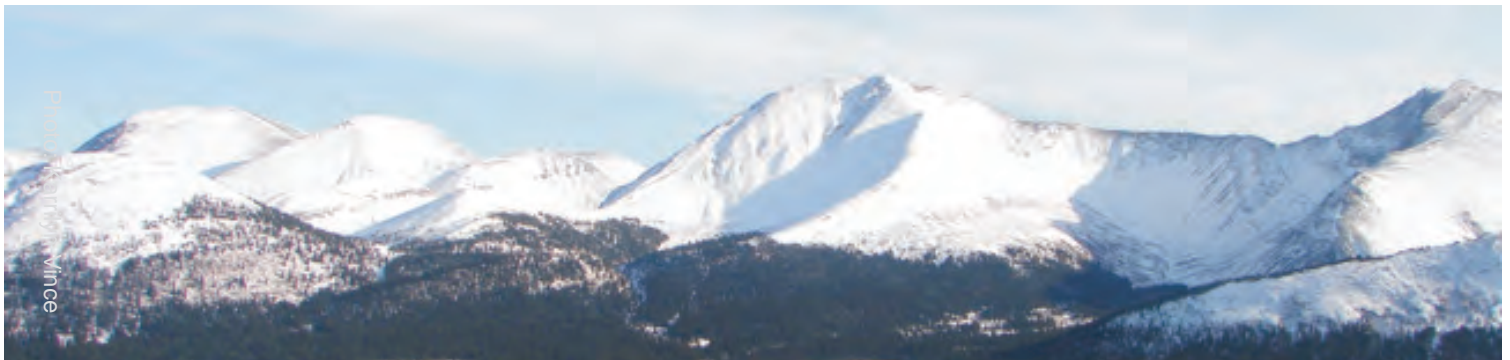
Wayne Lewis, Woodlands Manager with Abitibi Consolidated Company of Canada in Mackenzie, BC, contributed to the Mackenzie Land and Resource Management Plan as well as the Mackenzie addition to the M-KMA. A member of the Association of BC Professional Foresters and the Canadian Institute of Forestry, Wayne works with the Kaska Dena Council in support of forestry initiatives while serving as a Director of Tsay Tay Forestry Limited.



Wayne Sawchuk, an experienced backcountry horseman and nature photographer, brings a conservation perspective to the Board as well as extensive knowledge about forestry and oil and gas. Actively involved in the planning processes that led to the creation of the M-KMA, he is the winner of the 2006 Canadian Environment award. As a photographer he has captured a diverse wildlife and outdoor subjects with skill and artistry, and has donated many photographs for use in M-K publications, including the photos used in the 2005 Annual Report.



Karrilyn Vince, currently in the role of Muskwa-Kechika Program Manager for the Ministry of Agriculture and Lands Integrated Land Management Bureau, has a science and planning background. With degrees in Conservation Sciences and Environmental Planning, she spent many years living and working in the Muskwa area of the M-KMA. Karrilyn is serving as an Ex Officio member of the Board.



Appendix 2: M-KAB Expenditures by Program

Project #	Project Title	Base Funding Allocation	Expensed
Awareness and Support			
MK07-19	Implementation of the 2005-2006 Communication Strategy	\$ 60,000.00	\$ 68,163.46
MK07-20	M-KMA Youth Training Opportunities	\$ 50,000.00	\$ 57,000.00
MK07-21	M-K information Office Training Opportunities	\$ 20,000.00	\$ 21,055.45
MK07-22	Annual Report to the Premier	\$ 10,000.00	\$ 12,921.10
MK07-23	M-KAB Attendance Conferences and Community Events	\$ 15,000.00	\$ 8,314.02
MK07-24	UNBC Partnership	\$ 20,000.00	\$ 21,300.00
Total Allocated and Expensed		\$ 175,000.00	\$ 188,754.03
Knowledge and Understanding			
MK07-01	Planning and Research Integration Project	\$ 15,000.00	\$ 1,866.58
MK07-02	Establishment of an M-KMA Data Warehouse	\$ 30,000.00	\$ -
MK07-03	Long Term Research and Inventory Plan	\$ 30,000.00	\$ -
MK07-04	M-KMA Traditional Knowledge Management Strategy	\$ 50,000.00	\$ 43,250.00
MK07-05	Stone's Sheep Steering and Science Committee	\$ 30,000.00	\$ 33,586.98
MK07-06	Stone's Sheep Mapping Sulphur/8 Mile Area	\$ 15,000.00	\$ 15,000.00
MK07-07	Stone's Sheep Research	\$ -	\$ 198,000.00
MK07-08	Develop a Data Base for Range and Campsite Assessments	\$ 20,000.00	\$ -
MK07-09	Ecosystem Approach to Habitat Capability Modeling and Cumulative Effects Management	\$ 42,000.00	\$ 45,500.00
Total Allocated and Expensed		\$ 232,000.00	\$ 337,203.56
Monitoring, Reporting and Advice			
MK07-16	Development of a new Land Use Planning Implementation and Maintenance Model	\$ 150,000.00	\$ 138,034.40
MK07-17	State of the M-KMA Report	\$ 40,000.00	\$ 9,700.00
MK07-18	Enhancing Compliance and Enforcement in the M-KMA	\$ 20,000.00	\$ 20,000.00
Total Allocated and Expensed		\$ 210,000.00	\$ 167,734.40
Organizational Development			
MK07-25	M-K Chair Honorarium	\$ 24,000.00	\$ 24,000.00
MK07-26	M-KAB Mandate Delivery (travel, meeting rooms, catering and board facilitation)	\$ 75,000.00	\$ 138,034.44
MK07-27	Engagement of First Nations in the M-K Advisory Board	\$ 10,000.00	\$ -
MK07-28	M-KAB Office and Staff	\$ 155,000.00	\$ 135,049.35
MK07-29	M-K Trust Fund Project Manager	\$ 75,000.00	\$ 54,964.08
Total Allocated and Expensed		\$ 339,000.00	\$ 352,516.87
Resource Management			
MK07-10	Conservation Area Design (CAD) Management and Implementation	\$ 95,000.00	\$ -
MK07-11	Supporting the M-KMA Management Framework	\$ 75,000.00	\$ -
MK07-12	Restoration of the Redfern Trail	\$ 25,000.00	\$ 23,864.37
MK07-13	M-KMA Environmental Clean Up	\$ 30,000.00	\$ 26,613.35
MK07-14	Monitoring and Restoration from Oil and Gas Development in the Sikanni	\$ 30,000.00	\$ -
MK07-15	Oil and Gas Worker Orientation Manual	\$ 10,000.00	\$ 9,999.40
Total Allocated and Expensed		\$ 265,000.00	\$ 60,477.12
Contingency Fund			
MK07-30	Professional Services		\$ 30,702.88
MK07-00	Grant to the UNBC/M-K Endowment		\$ 100,000.00
Total Allocated and Expensed		\$ 79,000.00	\$ 130,702.88
TOTAL M-K Project Expenditures for 2006-2007		\$ 1,300,000.00	\$ 1,237,388.86

Notes...

This image shows a blank sheet of white paper with horizontal ruling lines. The lines are evenly spaced and run across the width of the page. There are no margins, text, or other markings on the paper.



Contact Information:

Muskwa-Kechika Information Office

(Located in the Fort St John Visitor's Centre)

Suite 200, 9523-100th Street

Fort St. John, BC V1J 4N4

Phone: (250) 262-0065

Fax: (250) 262-0077

e-mail: coordinator@muskwa-kechika.com

www.muskwa-kechika.com