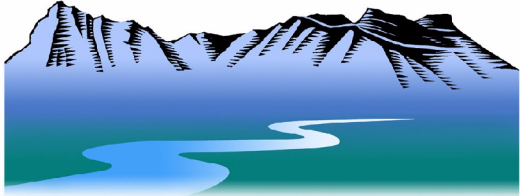
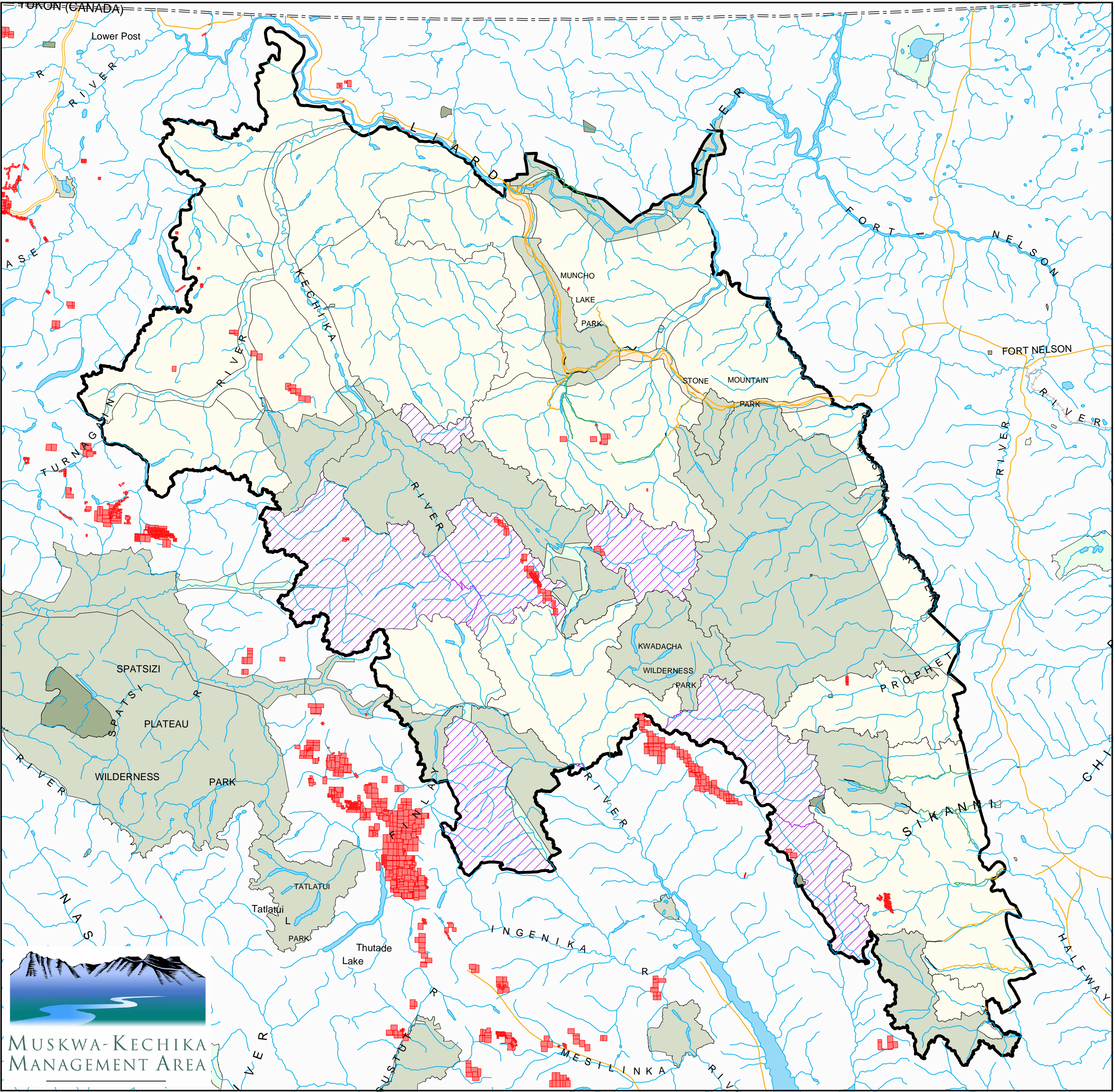


Muskwa Kechika Management Area: Mineral Tenures



MUSKWA-KECHIKA
MANAGEMENT AREA



	Muskwa Kechika Management Area Boundary		Road
	Parks		Trail
	Ecological Reserves		Rail Line
	Private In-holdings		Closed to all motor vehicle traffic (except snowmobiles in winter)
	Protected Areas		Travel is restricted to within 10 metres of route
Resource Management Zones			Travel is restricted to within 10 metres of route (vehicles under 500 kg only)
	Agriculture/Settlement		Travel is restricted to within 400 metres of route *
	Enhanced		Travel is restricted to within 400 metres of route (vehicles under 500 kg only)
	General		River/Stream
	Special		River/Lake
	Special - Wildland		Marsh
	Mineral Tenure		

* Restricted to Alaska Highway right of way through Muncho Lake, Stone Mountain and Northern Rocky Mountains Parks/Protected Areas

1:1,100,000

0 10 20 30 40 50
Kilometers

Data Sources and Notes

Muskwa Kechika Management Area Boundary - Ministry of Sustainable Resource Management (Peace)

Mineral Tenures - Ministry of Energy and Mines (October 2003)

Muskwa Kechika Designated Access Routes - Ministry of Water, Land and Air Protection (Peace)

Parks and Protected Areas - Ministry of Water, Land and Air Protection (Peace)

Resource Management Zones - Ministry of Sustainable Resource Management (Prince George)

Produced for:
Resource Management Division - NIR

Produced by:
 BRITISH COLUMBIA

**Ministry of Sustainable Resource Management
Business Solutions Branch**

Projection/Datum: Albers/NAD 83
Date Created: August 10, 2004
Created by: Prince George Service Centre